

Higher Education Parents Information Evening

14th May 2026

Welcome Everyone



Why this matters to me?

- First member of direct family to go to university.
- Academia was not a common route beyond 18 at my school
- Wish I had known more – it is a scary decision.
- Our students deserve to have every option available to them.
- It is for everyone
- Proud and ambitious of what our students can achieve.



First ever platinum academy meeting

Less than 30-40% put their hands up when asked if they were considering university as a post 18 option.





We started with a survey

Supporting Future Higher Education Applicants – Parent Survey

B *I* U  

Thank you for taking the time to support our school community with future planning.

Your responses will be used to help us identify students who may benefit from additional guidance, mentoring and funded opportunities linked to university and higher education.

Where appropriate, your child's name may be added to an internal support list so that we can offer relevant opportunities directly to them. This information will remain confidential within the school and will not be

Survey Results

50% stated that neither parent had completed higher-level education

80% stated that their child had expressed an **interest** in going to university

50% stated their child had expressed an interest in degree apprenticeships

90% stated that they would welcome additional advice about higher education pathways to support their child

UNIVERSITY & HIGHER EDUCATION:

WHAT PEOPLE OFTEN HEAR

“University is just **too expensive**”

“Graduates don’t get better jobs anymore”

“A degree **isn’t worth** what it used to be”

“Too much theory, not enough real world skills”

“University is a **waste of time and money**”

“Students are just spending 3 years partying”

“Why go to university when you can **earn and learn on the job?**”

“Not everyone is ‘academic’ – university isn’t for people like me”

“Too many graduates, **not enough jobs**”

“Debt, stress and **no guarantee**”



These are common headlines and opinions...
But they don't tell the whole story.

“I won’t fit in, I’m not a higher education person. It’s not for me.”

- Over 50% of young people go to university
- Students come from all backgrounds
- Extra support, bursaries, and mentoring are available
- If you want to go, you belong

University can be for anyone, including you.



The goals of today

01

To help families understand higher education and support their young people

02


To challenge some common perceptions of higher education

03

To help families encourage ambition in their young people

A large orange circle on the left side of the slide, partially cut off by the edge.

Some key things to explore

- What is Higher Education?
 - Why young people may choose higher education
 - University and degree apprenticeships
 - Understanding the cost of university and student finance
 - How school choices and opportunities can support a future higher education pathway
 - How students and families can explore opportunities and find out more
- 
- A decorative graphic in the bottom right corner consisting of several blue, curved, dashed lines of varying lengths, arranged in a roughly circular pattern.

Some things to know...

- All routes in life can bring financial success and happiness
- Apologies if some information is simple and broad
- Some topics naturally have different viewpoints
- Information is correct now, but things will always change

“This evening is not about deciding your child’s future. It’s about helping families understand the landscape a little earlier.”



BUT FIRST...
FURTHER
EDUCATION



YOUR FUTURE. YOUR CHOICE.

SCHOOL 6TH FORM



CONTINUE YOUR STUDIES.
ACHIEVE YOUR POTENTIAL.



A-LEVELS & QUALIFICATIONS



UNIVERSITY PROGRESSION



WIDER OPPORTUNITIES

ACADEMIC COLLEGE



FOCUS ON WHAT YOU LOVE.
PREPARE FOR YOUR FUTURE.



A-LEVELS & HIGHER EDUCATION



SPECIALIST SUBJECTS



UNIVERSITY & BEYOND

VOCATIONAL COLLEGE



PRACTICAL SKILLS.
REAL-WORLD EXPERIENCE.



PRACTICAL COURSES



INDUSTRY EXPERIENCES



CAREER FOCUSED

APPRENTICESHIP



LEARN. EARN. SUCCEED.
BUILD YOUR CAREER.



EARN A SALARY



GAIN VALUABLE SKILLS



REAL CAREER PROGRESSION



PLUMPTON
COLLEGE



Worthing
College



Northbrook
College



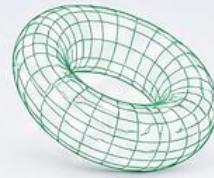


$y = mx + c$

$\int x^2 dx = \frac{x^3}{3} + C$

MATHEMATICS

**FURTHER
MATHEMATICS**



PHYSICS



CHEMISTRY



**ENGLISH
LITERATURE**

**ENGLISH
LANGUAGE**



BIOLOGY



HISTORY



GEOGRAPHY

POST 16 ACADEMIC SUBJECTS

PSYCHOLOGY



**RELIGIOUS
STUDIES**



SOCIOLOGY

FRENCH



SPANISH

GERMAN



ECONOMICS



BUSINESS



**COMPUTER
SCIENCE**



POLITICS



LAW



PHILOSOPHY



ART & DESIGN



**HEALTH &
SOCIAL CARE**



**CHILDCARE &
EDUCATION**



**BUSINESS &
ADMINISTRATION**



ENGINEERING



CONSTRUCTION



**DIGITAL &
IT**



**CREATIVE MEDIA &
DIGITAL PRODUCTION**



**TRAVEL &
TOURISM**



**HOSPITALITY &
CATERING**



**SPORT &
FITNESS**



**ANIMAL CARE &
MANAGEMENT**



PUBLIC SERVICES



**ENVIRONMENTAL &
LAND-BASED STUDIES**



POST 16 VOCATIONAL AREAS

BTECS • T-LEVELS • C&G'S • APPRENTICESHIPS & MORE

**BEAUTY &
HAIRDRESSING**



**MEDIA, MARKETING
& COMMUNICATION**



**PERFORMING
ARTS**



**RETAIL &
CUSTOMER SERVICE**



**LOGISTICS &
SUPPLY CHAIN**



**MOTOR VEHICLE
& TRANSPORT**



SCIENCE



**SECURITY &
PROTECTIVE SERVICES**



**DESIGN, SURVEYING
& PLANNING**



FINANCE



**FOOD &
NUTRITION**



**HAIR &
BARBERING**



**COMPULSORY
EDUCATION
ENDS HERE**





IT'S NOT 18 OR NEVER



GAP YEAR



WORKING



VOLUNTEERING



TRAVELLING



What is Higher Education?

Level	Qualification / educational route				
8	Doctorate (PhD)			NVQ 8	
7	Masters degree (MA)			Degree apprenticeship / NVQ 5, 6, 7	
6	Bachelors degree BA or BSc				
5	Foundation degree FdA or FdSc	Higher National Diploma (HND)			
4	Higher National Certificate (HNC)			Higher apprenticeship / NVQ 4	
3	A levels Grades A-E	International Baccalaureate	T Levels	BTEC diploma BTEC certificate	Advanced apprenticeship / NVQ 3
2	GCSE Grades 4-9 (C, B, A or A*)			BTEC first diploma	Intermediate apprenticeship / NVQ 2
1	GCSE Grades 1-3 (D,E,F or G)			Foundation diploma / entry level qualifications	Traineeship / NVQ 1
	Academic route		Vocational route	Applied / work route	



UNIVERSITY

— PATHWAY —



DEGREE APPRENTICESHIP

— PATHWAY —



WORKING

— PATHWAY —





Some useful definitions

- **Bachelor's degree** – A qualification gained from completing level 6
- **Master's degree** – A qualification gained from completing level 7
- **A Graduate** – Someone who has completed level 6
- **University** – An institution that provides higher education
- **Apprenticeship** – A full-time paid job – The employer pays for your further or higher education – Usually at a fixed college or university
- **Higher Education** – All of the above or just parts of it



Why Young People Might Consider Higher Education?

- Access to careers
- Higher earning potential
- Independence & control
- Becoming an expert
- Academic rigor
- Personal growth

THE KEY HEADLINE NUMBERS

How a degree in the UK boosts earning potential



1. ANNUAL SALARY DIFFERENCE

Median graduate earnings are about

£40,000

vs

£29,500

for non-graduates



That's roughly
£6,500
yearly gap on average.



2. EARLY CAREERS GROWTH

Ages 23–31:

Graduates 
+72%
earnings growth

Non-graduates 
+31%
earnings growth



Key point: the gap widens over time, not just at the start.



3. EMPLOYMENT & HIGH-SKILLED WORK

Employment rate:



Graduates
~88%



Non-graduates
~68%

High-skilled roles:



Graduates
~68%



Non-graduates
~24%



Careers may increase access to **higher skilled, higher paying** roles.

What is University?

- Study a subject in depth
- Academic or vocational
- Independent learning
- 3-4 years dedicated study
- Study home or away
- Thousands of courses & possible destinations



Degree Examples



Paramedic Science – University or Apprenticeship
Vocational, hands-on healthcare degree leading directly into a profession.



History & Politics – University
Broad academic degree developing research, analysis, communication and critical thinking skills across many career areas.



Mechanical Engineering – University or Apprenticeship
Technical and problem-solving degree linked to industries such as manufacturing, aerospace, automotive and energy.



What is a Degree Apprenticeship?

- Full time job
- + a degree
- 3-6 years
- Earn a salary
- No tuition fees
- Real work experience

DEGREE APPRENTICESHIPS: REAL OPPORTUNITIES


— Earn while you learn. Graduate with a degree and real work experience. —



JAGUAR LAND ROVER
ENGINEERING DEGREE APPRENTICE



 Company	Jaguar Land Rover
 Degree	Engineering / Digital & Technology (various pathways available)
 University Partner	University of Warwick (and other partner universities)
 Length	4 years
 Starting Salary	£24,500+
 Typical Entry Requirements	96 UCAS Tariff Points (e.g. BBB at A Level / equivalent) Usually to include Maths


 **Outcome:** BSc degree + industry experience + salary throughout your apprenticeship.



PWC FLYING START
DEGREE APPRENTICE



 Company	PwC
 Degree	Accounting / Business (various pathways available)
 University Partner	Ulster University (and other partner universities)
 Length	4 years
 Starting Salary	£27,800
 Typical Entry Requirements	104 UCAS Tariff Points (e.g. AAB at A Level / equivalent) Usually to include Maths

 **Outcome:** Degree + professional qualifications + paid work experience from day one.

BAE SYSTEMS

amazon

RICARDO



pwc

BARCLAYS

Google



Microsoft

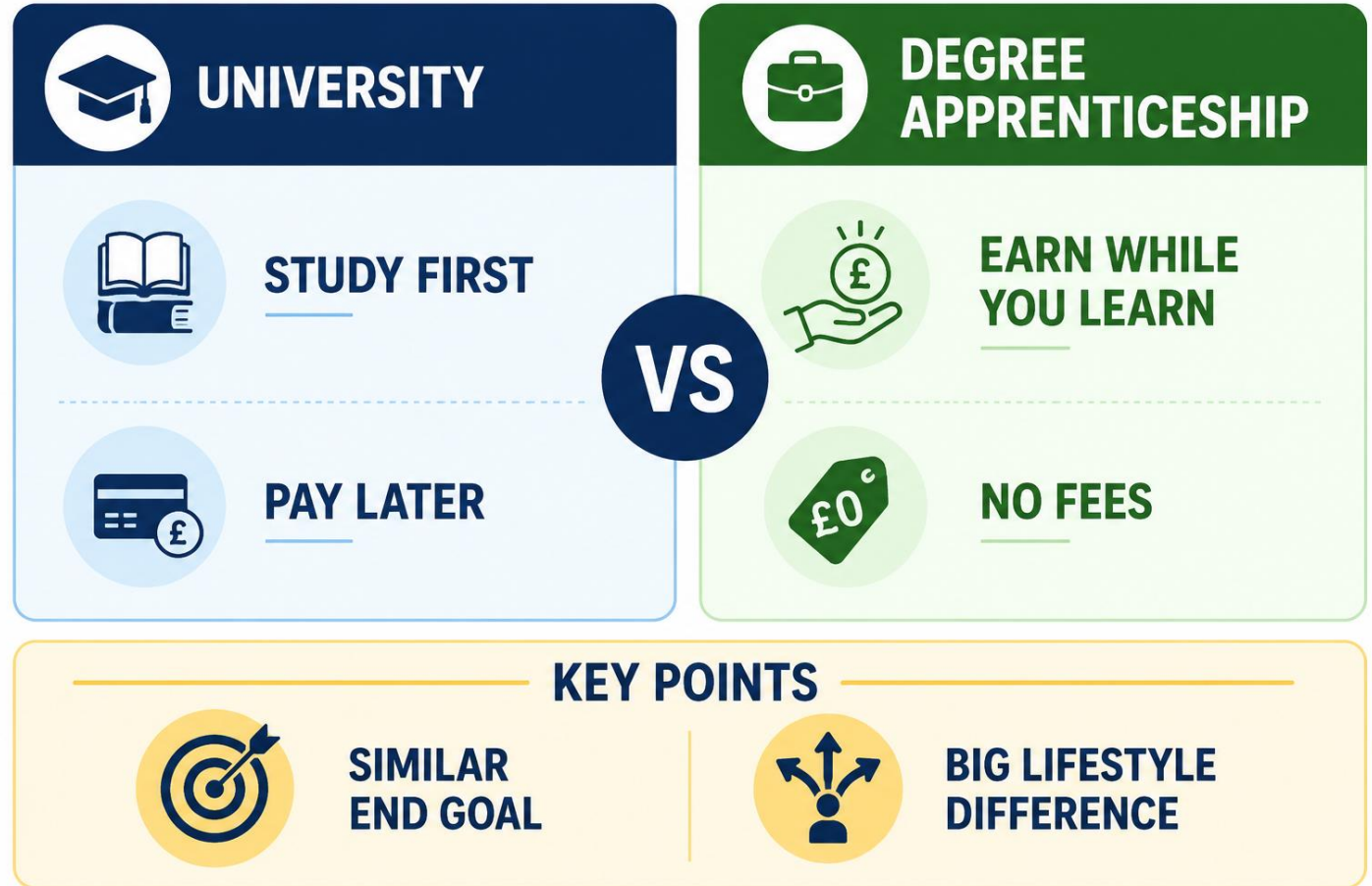
JOHN LEWIS & PARTNERS

Degree Apprenticeship Challenges

- Far fewer places
- Highly competitive
- Employer-led applications
- Balancing work & study
- A strong application profile is often needed

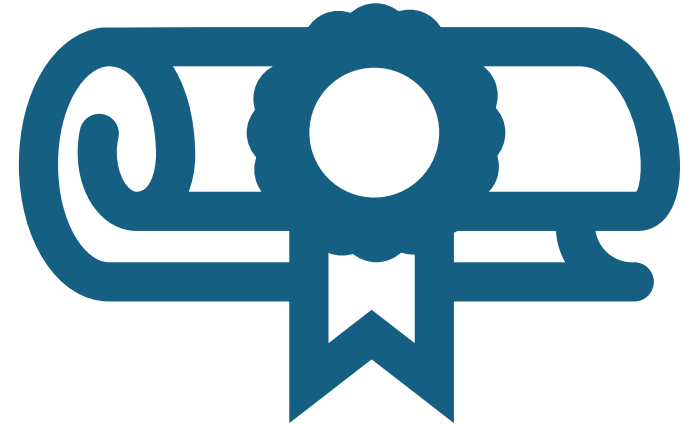


Quick Comparison



Keeping both doors open

- University = structured, widely available
- Degree apprenticeships = competitive, limited
- Build a strong application profile so both are an option



STUDENT FINANCE:

WHAT PARENTS OFTEN HEAR

“Graduates trapped by huge debts”

Students leaving university owing **£50,000+**

Interest means debts keep **growing**

“Repaying for 40 years”

One graduate owed **£300,000**

“Student loans **crisis**”



Some of these headlines contain truth...
but they often lack context.

STUDENT FINANCE: KEY POINTS



No upfront tuition payment required

You don't pay anything before or during your course.



Available to almost all eligible students

Student finance is available to most students who meet the residency requirements.



Tuition fee loan covers the full cost of your course

The loan is paid directly to your university or college.



Maintenance support helps with rent and living costs

You can get a loan to help with day-to-day expenses while you study.



Maintenance support is based on household income

The amount you can get depends in part on your household income.



Repayments only begin above £25,000

You start repaying once you earn more than £25,000 a year (before tax).



Repayments adjust automatically with your earnings

You repay 9% of anything you earn over £25,000.

If you earn less, you pay less. If you earn below £25,000, you pay nothing.

STUDENT FINANCE: REPAYMENT EXAMPLES

You only repay what you can afford.



Repayments are **9%** of earnings above **£25,000**.
These are approximate figures.

ANNUAL SALARY (BEFORE TAX)	APPROX. TAKE HOME PAY (PER MONTH)	MONTHLY REPAYMENT (9% OVER £25,000)	HOW IT WORKS
 £30,000	~£2,000	~£37	£30,000 salary = £5,000 over £25,000 9% of £5,000 = £450 a year ~£37 a month
 £60,000	~£3,700	~£262	£60,000 salary = £35,000 over £25,000 9% of £35,000 = £3,150 a year ~£262 a month
 £90,000	~£5,200	~£487	£90,000 salary = £65,000 over £25,000 9% of £65,000 = £5,850 a year ~£487 a month



Payments are taken automatically from your salary through the payroll system.
If your earnings go down, your repayments go down. If you earn below £25,000, you pay nothing.

Bursaries & Extra Support

“As a university we actively want talented students from all backgrounds to succeed, and we aim to provide financial support to help them do so.”

- University Bursaries
- Scholarships
- Contextual Offers
- DSA Support

DISABLED STUDENTS' ALLOWANCE (DSA)

DSA is a **non repayable grant** to support a young person through University.

THE TOP 5 MOST COMMON CONDITIONS DSA SUPPORTS



1

SPECIFIC LEARNING DIFFICULTIES

Examples:

Dyslexia, dyspraxia, ADHD



2

MENTAL HEALTH CONDITIONS

Examples:

Anxiety, depression, OCD



3

AUTISM SPECTRUM CONDITIONS

Examples:

Autism, Asperger's syndrome, ADHD



4

PHYSICAL DISABILITIES

Examples:

Mobility difficulties, wheelchair users, chronic physical impairments



5

LONG-TERM HEALTH CONDITIONS

Examples:

Diabetes, Crohn's, cancer, chronic fatigue, epilepsy



DSA is much broader than many families realise. It is **not just** for students with severe physical disabilities.

Ways to start exploring & encouraging

- **Light** research using university websites, company websites and Xello
- Explore university summer schools and virtual work experiences (Springpod / Futures For All)
- Engage with careers teams in school and college to explore careers
- Talk to people already on these pathways
- Keep doors open through strong GCSEs, attendance
- Read beyond lessons and explore interests independently
- Take part in enrichment, clubs, volunteering and competitions where possible
- Ask questions and stay curious about opportunities





☀️ We hope ☀️

this has been useful.



☀️ Thank You ☀️



for joining us. ♡



We are available
for **questions** after.

